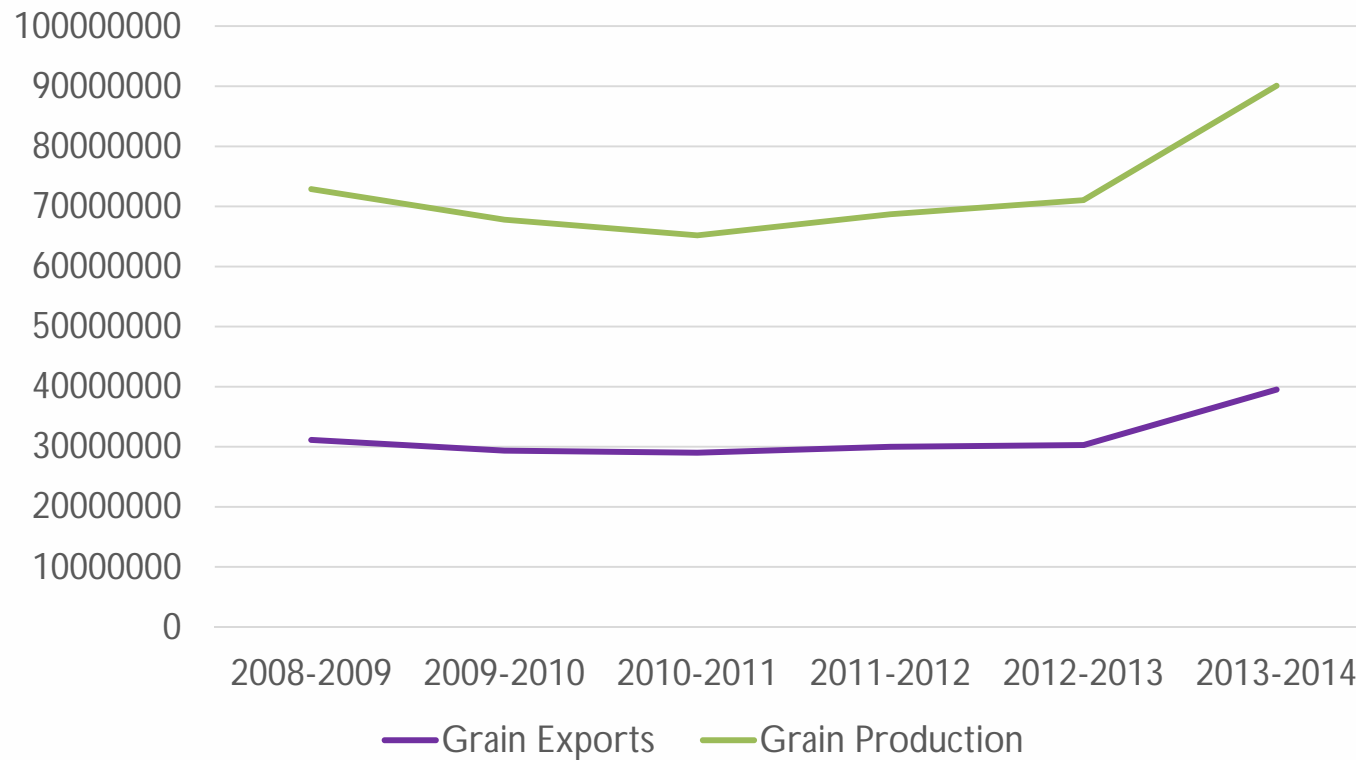




# Oat Transportation Issues

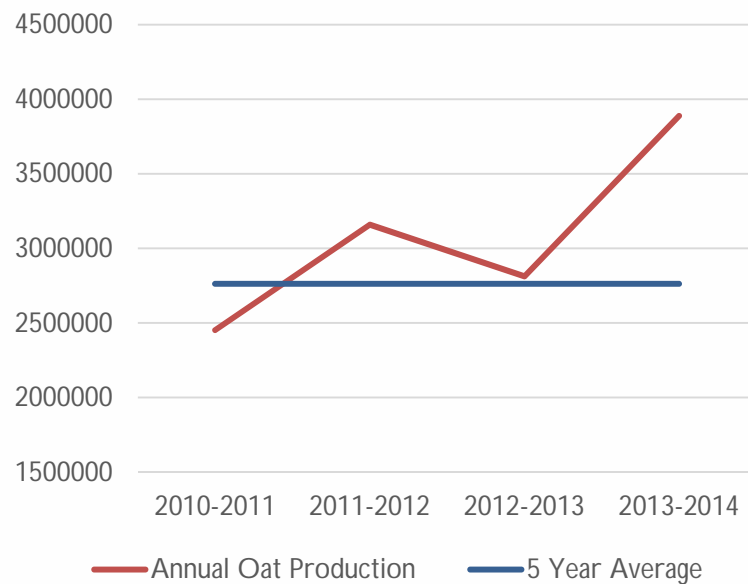
# Situation Report – 2013/14 Final

Total Canadian Grain Exports Versus Production  
Source: Statistics Canada

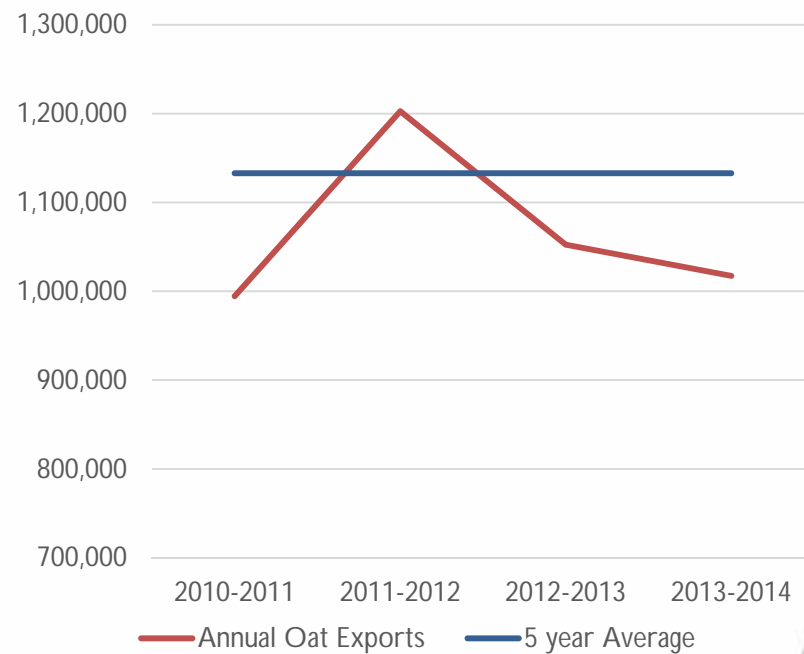


# Situation Report – 2013/14 Final

Total Canadian Oat Production  
Source: AAFC Outlook for Principal Field Crops

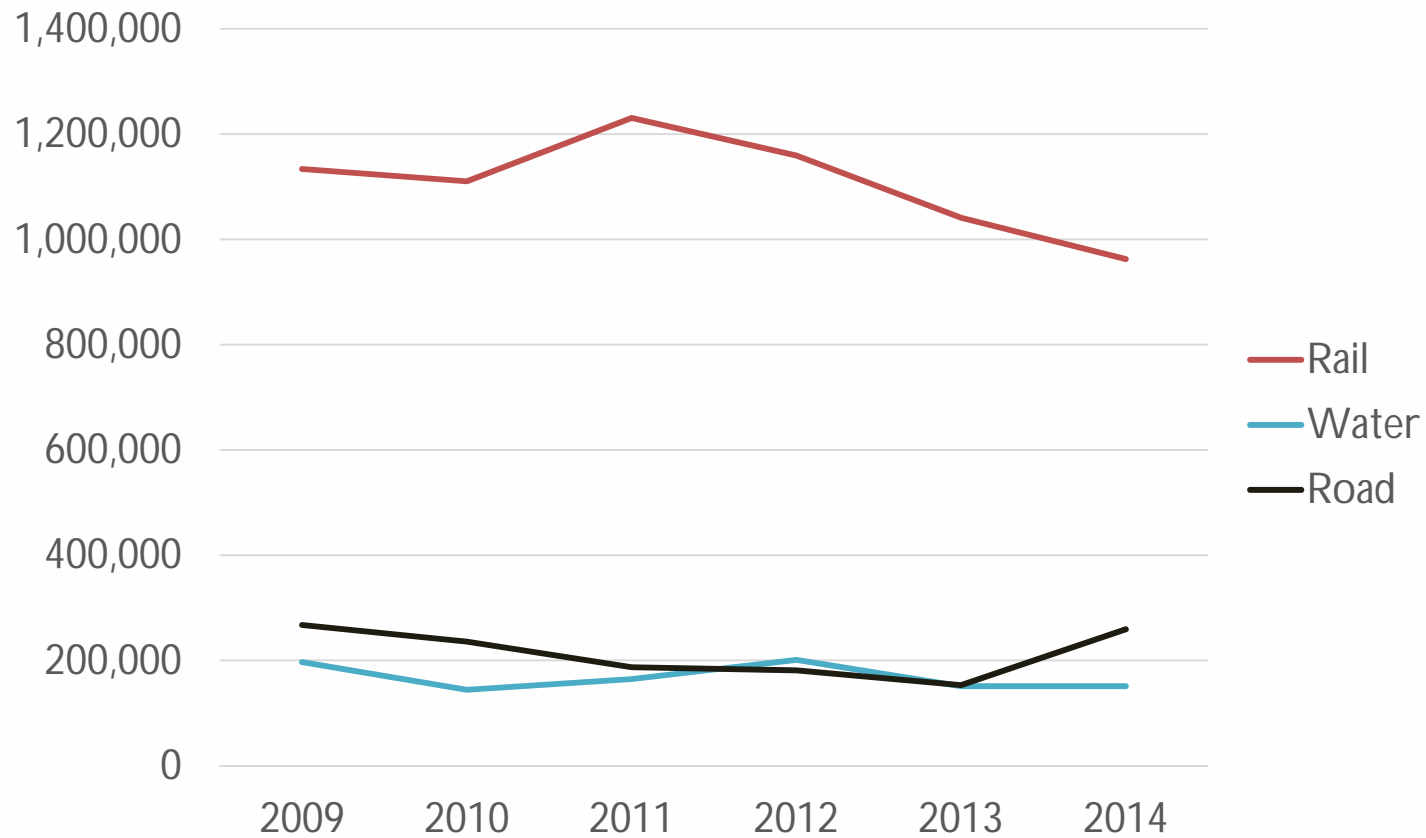


Total Canadian Oat Exports  
Source: CGC Grain Statistic Weekly



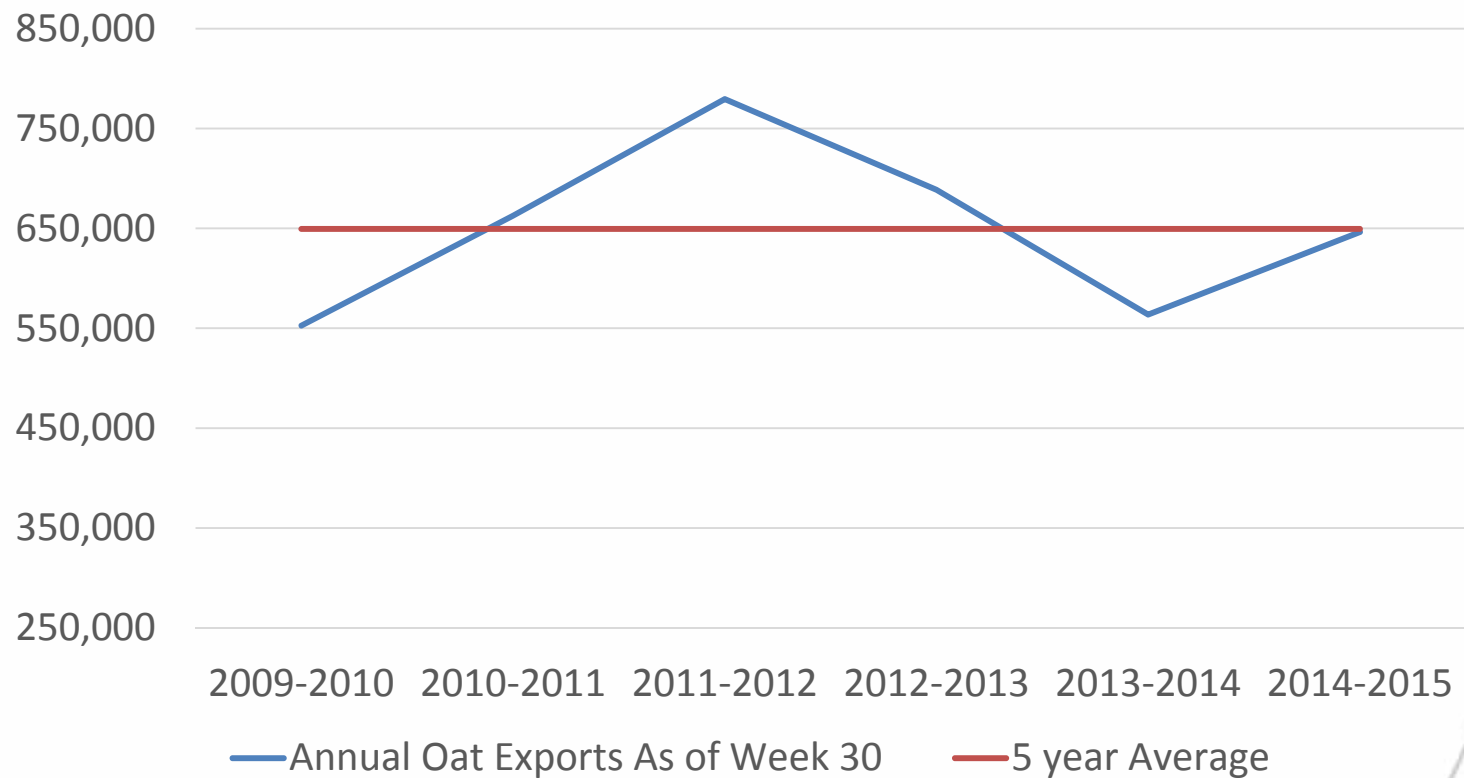
# Situation Report – Modal

Canadian Oat Exports to the US By Mode (In Tonnes)

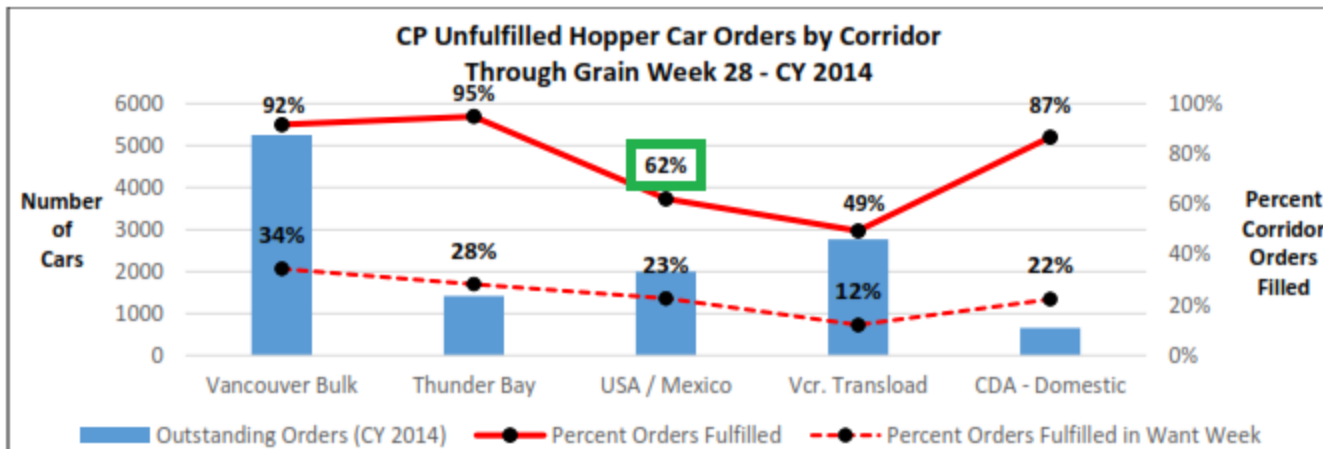
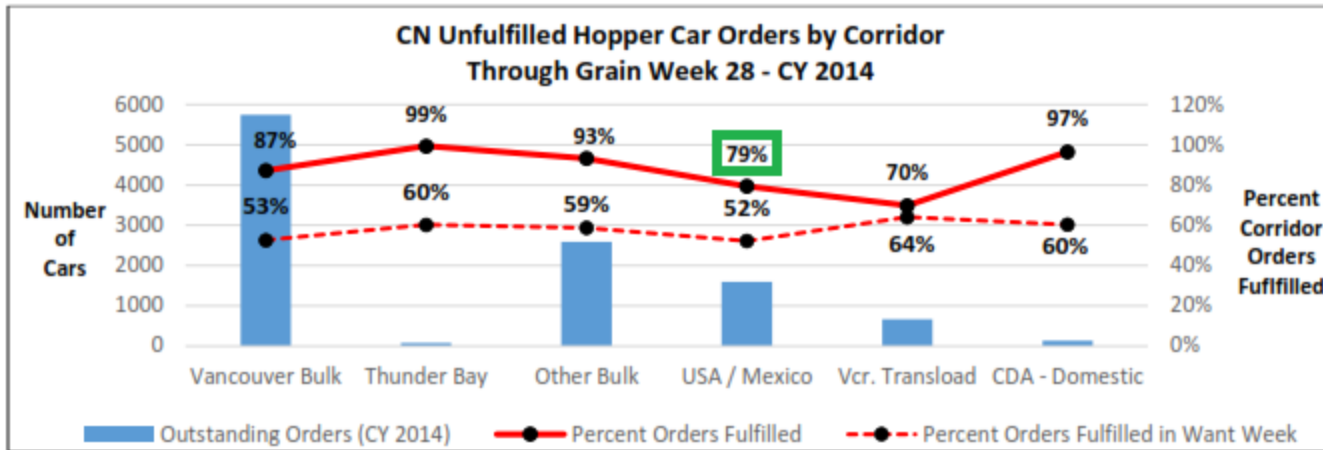


# Situation Report – 2014/15

Annual Oat Exports As of Week 30  
(Week ending March 1st)



# Situation Report – 2014/15



# Minimum Grain Movement Levels

Time period	Metric tonnes per week
Nov. 30, 2014 to Dec. 20, 2014	345,000
Dec. 21, 2014 to Jan. 3, 2015	200,000
Jan. 4, 2015 to Feb. 21, 2015	325,000
Feb. 22, 2015 to Mar. 21, 2015	345,000
Mar. 22, 2015 to Mar. 28, 2015	465,000

# CTA Review Submission

- Document developed over multiple drafts
- Outlines positions on a number of issues, and provides background information
- 27 pages long
- Submitted to the CTA Review Secretariat in December



# CTA Review Submission

## 5 Year Forecast

- Consultations with all rail transportation stakeholders held every 5 years
- Include consideration of expected production, capacity strains, and
- Result in the creation of grain movement targets
  - By Commodity
  - By Sector
- Reviewed annually by the agency

# CTA Review Submission Tiered Response Program

- Based on the movement targets established by the 5 year forecast
- Establishes measures to be taken in the event of movement falling below targets



# CTA Review Submission Tiered Response Program

30% Above Target: Increase Revenue Entitlement

Grain Movement: Normal Market

10% Below Target: Hybrid Car Allocation Model

20% Below Target: Allocation Dispute Arbitrator

30% Below Target: Mandatory Movement Levels

# CTA Review Submission Monitoring

- Comprehensive overhaul of the rail information monitoring system
- Remove the asymmetrical relationship between shippers and railways in dispute situations
- Agency should collect waybill samples, as they do in the US
- Improve reporting on traffic to the US
  - Improvements in both **Commodity** and **Corridor** data

# CTA Review Submission Revenue Entitlement

- Costing Review
- Incentives for performance above the targets established in the 5 year cycle of planning



# CTA Review Submission Commodities and Corridors

- The public information on cross-border rail traffic is dramatically insufficient
- Waybill samples for cross-border traffic should be collected and made available to the public
- Reporting on railcars sent across the border should include complete information, including final destinations

# CTA Review Submission Service Level Agreements

- Adopt CRS Proposals
  - Definition of Adequate and Suitable
  - Remove “operational” from “operational term”
  - Create mechanism for shippers to determine if a breach of service agreement has occurred
  - The requirement that complaints against railways include multiple shippers be lifted
  - Allow shipper to frame the matter of dispute
  - Remove consideration of railway company’s network
- Establish a multi-party Final Offer Arbitration process

# CTA Review Submission

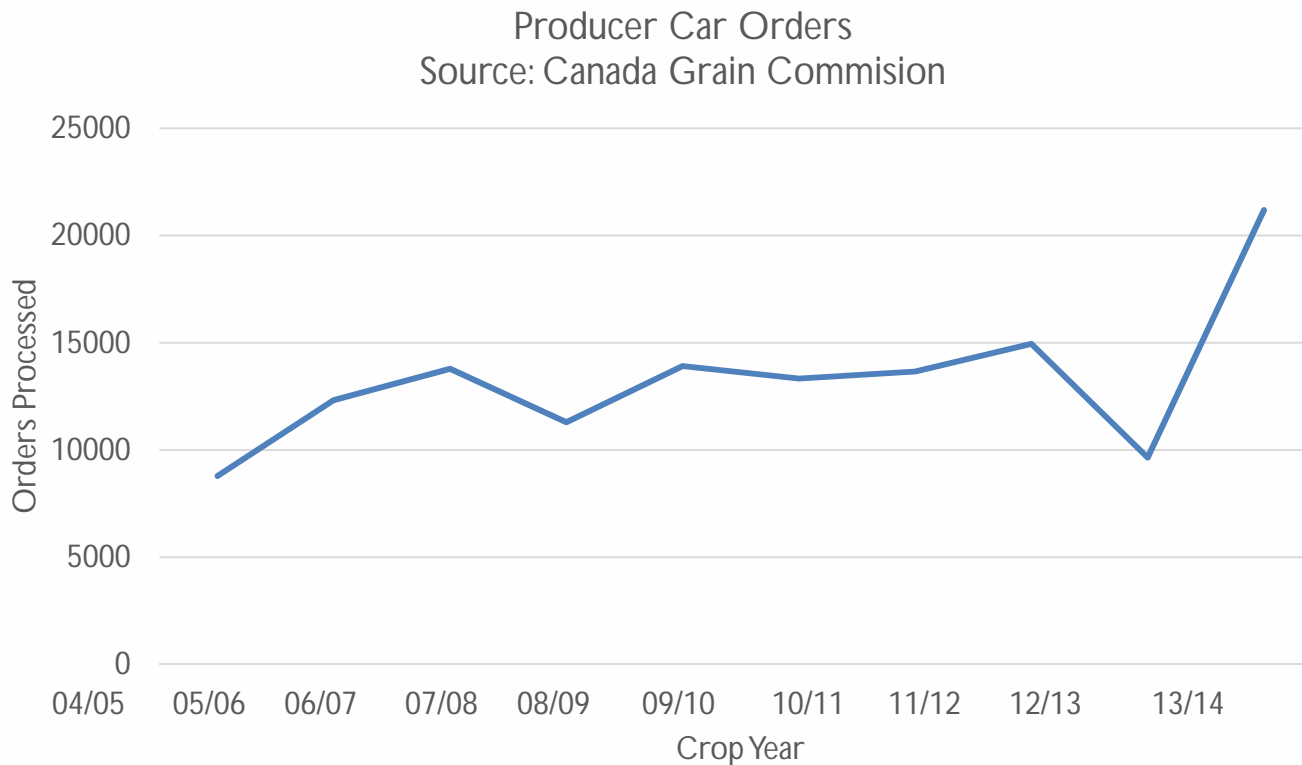
## Producer Cars and Fostering Small Volume Shipments

- Allow for the creation of boutique producer car operations
  - Allow these organizations to introduce private cars into the system
- Priority be given to producer car orders of 10 or more cars at one destination at one time
- Create arbitrator assigned specifically to producer car shipments of 50 cars and below
- Equity in the system for shipments of 25 cars and under



# CTA Review Submission

## Producer Cars and Fostering Small Volume Shipments



# Ottawa Outreach



# Ottawa Outreach - Parliamentarians

- **Bev Shipley**, Chair of House Committee on Agriculture
- **Gerald Keddy**, Parliamentary Secretary to Minister of Agriculture
- **Robert Sopuck**, Chair of Conservative Manitoba Caucus
- **Larry Maguire**, MP from Brandon-Souris
- **Malcolm Allen**, Opposition Critic on Agriculture
- **Ruth Ellen Brosseau**, Deputy Opposition Critic on Agriculture
- **David McGuinty**, Liberal Critic on Transportation
- **Mark Eyking**, Liberal Critic on Agriculture
- Representative of Gerry Ritz, Minister of Agriculture
- Representative of Larry Miller, Chair of House Committee on Transportation

# Ottawa Outreach - AAFC

- **Chris Forbes**, Associate Deputy Minister, AAFC
- **Greg Meredith**, Assistant Deputy Minister, Strategic Policy Branch
- **Devin Dreeshan**, Policy Advisor to the Minister of Agriculture
- **Steve Lavergne**, Director, Grains and Oilseeds Division
- **Sally Scott**, Director, Crop Sector Policy
- **Tony McDougall**, Deputy Director, Grains and Oilseeds **James Hayward**, Deputy Director, Crop Sector Policy
- **Carolyn Campbell**, Policy Analyst, Crop Sector Policy
- **Shane Campbell**, Sector Specialist, Grains and Oilseeds Division
- **Jarett Goodwin**, Canada Grains Commission

# Ottawa Outreach - Railways

- **David Miller**, Assistant Vice President, CN
- **Robert Taylor**, Assistant Vice President, CP
- **Michael Gullo**, Director, Policy, Economic and Environmental Affairs



# Call to Action!

POGA believes that the Canadian rail system should be

Fair

Responsive

Efficient

Transparent





[www.emerging ag.com](http://www.emerging ag.com)

[robynne@emerging ag.com](mailto:robynne@emerging ag.com) +1-204-227-4611